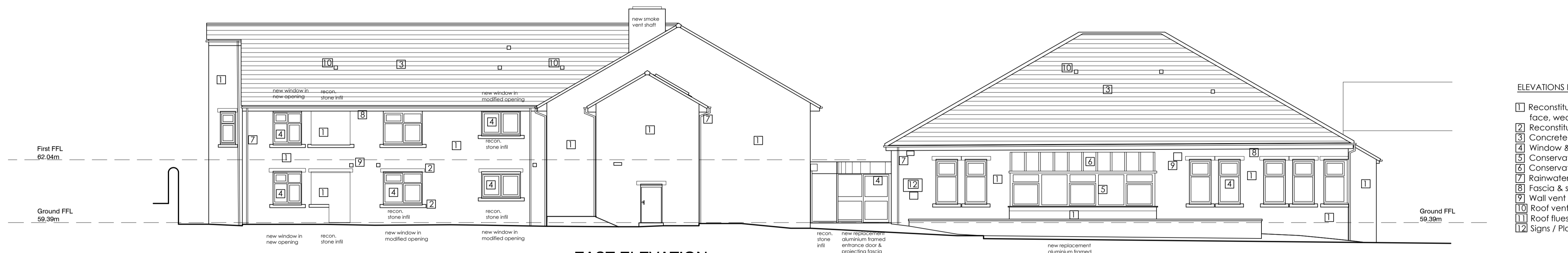


**NORTH ELEVATION**



**EAST ELEVATION**



**SOUTH ELEVATION**



**WEST ELEVATION**

- ELEVATIONS LEGEND**
- 1 Reconstituted stone facings, regular coursing, pitched face, weathered.
  - 2 Reconstituted stone cills & lintels, smooth face, buff
  - 3 Concrete roofing tiles, plain, brown.
  - 4 Window & Door frames, upvc, brown.
  - 5 Conservatory frames, aluminium, brown.
  - 6 Conservatory Roof glazing frames, aluminium, brown.
  - 7 Rainwater goods, upvc, brown.
  - 8 Fascia & soffit, upvc brown & white.
  - 9 Wall vent grilles, upvc beige
  - 10 Roof vent grilles, upvc, brown
  - 11 Roof flues
  - 12 Signs / Plaques

REV	DATE	DESCRIPTION	REVISED BY	CHECKED BY