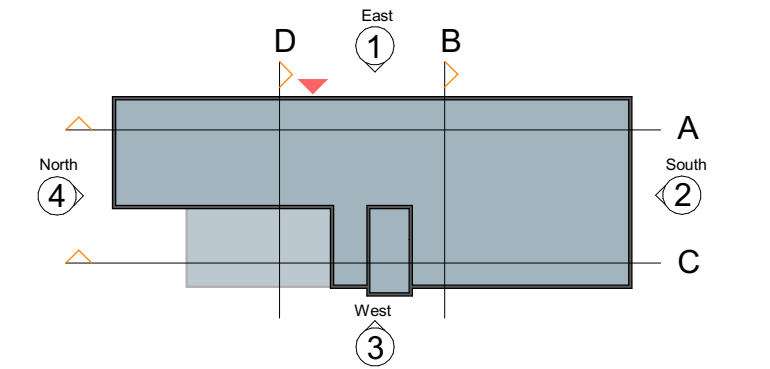




SCALE 1:100 @ A1



Materials Key

- Swisspearl fibre cement cladding see specification for colours
- Dark grey Samametal parapet trim (RAL 7021)
- White School Logo/ Crest Signage (RAL 7021)
- Stofix brick slip cladding - TYPE TBC
- PPC aluminium curtain walling/ intergrated doors (RAL 7021)
- PPC aluminium windows/doors (RAL 7021)

Notes: Windows to be openable and restricted to suit Building Services ventilation strategy. Colours to be chosen from the manufacturers standard colour range.

Linked File Name	Project Status	Author	Date Issued
SRP1085-CHD-01-ZZ-M-Z-0001	RIBA Stage 3	CHD	
SRP1085-CUR-01-ZZ-M-S-0001-P02_Structural	Project Status		Issue Date
Model			
SRP1085-SP2-ZZ-ZZ-M-O-0001	S2	Lewis Duffell	Issue Date

ALL	13.06.23	Submission for Planning
ALL	06.01.23	UPDATED DRAFT CP
ALL	20.12.22	WIP DRAFT CP ISSUE
REV	DATE	DESCRIPTION

CLIENT



CONTRACTOR



CONSULTANT



PROJECT

SRP1085 St Joseph's School

DRAWING TITLE

Elevations - 1 -100

DRAWING PURPOSE

DRAWN BY	DATE	CHK'D BY	SCALE	MEDIA
JJW	13.06.23	ALL	As indicated	A1

CONTRACT DRAWING REFERENCE (AS REQUIRED)

PROJECT - ORIGINATOR - ZONE - LEVEL - TYPE - ROLE - NUMBER	REVISION
SRP1085-PEV-01-ZZ-D-A-3100	P03



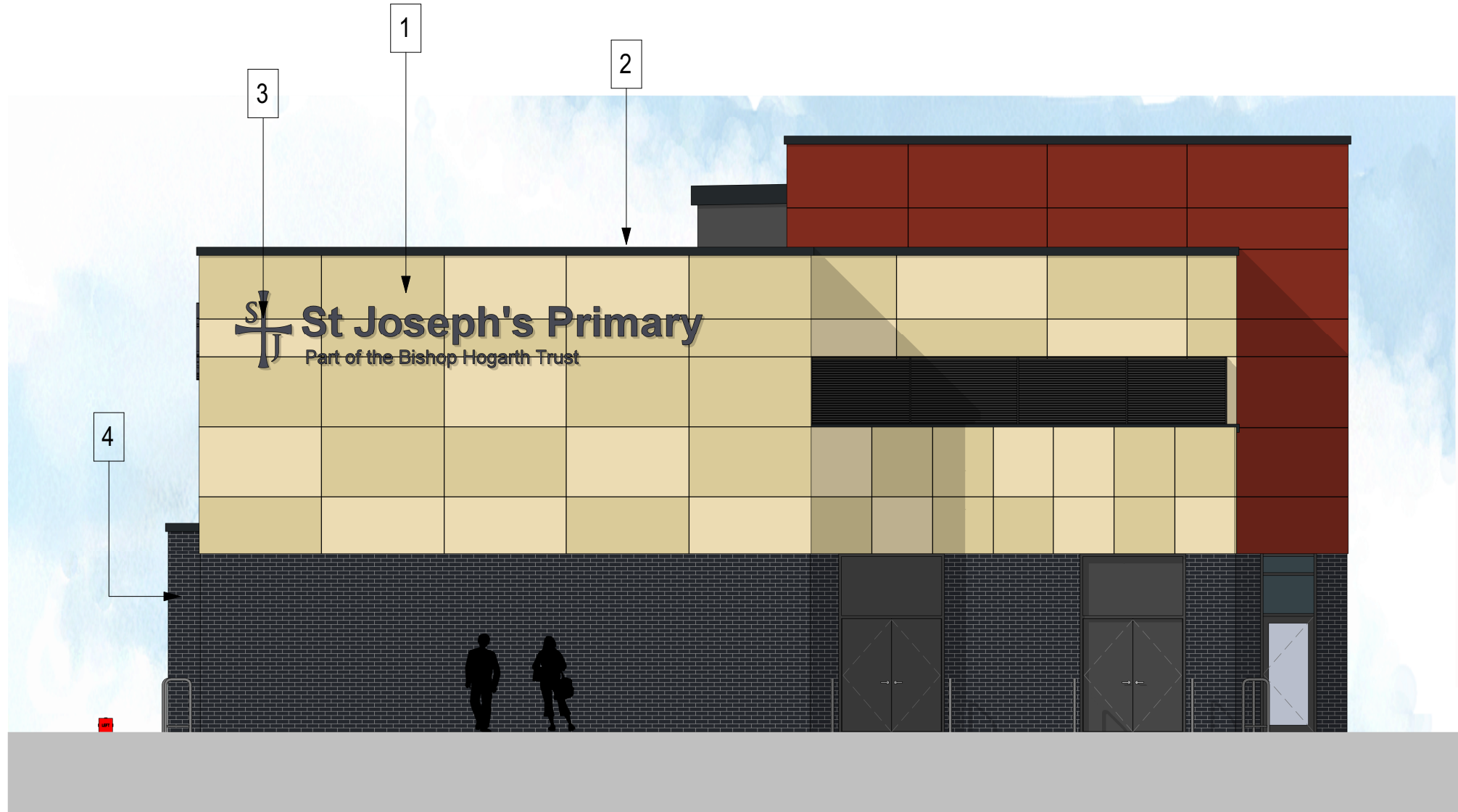
North Elevation (Front)

Scale - 1 : 100



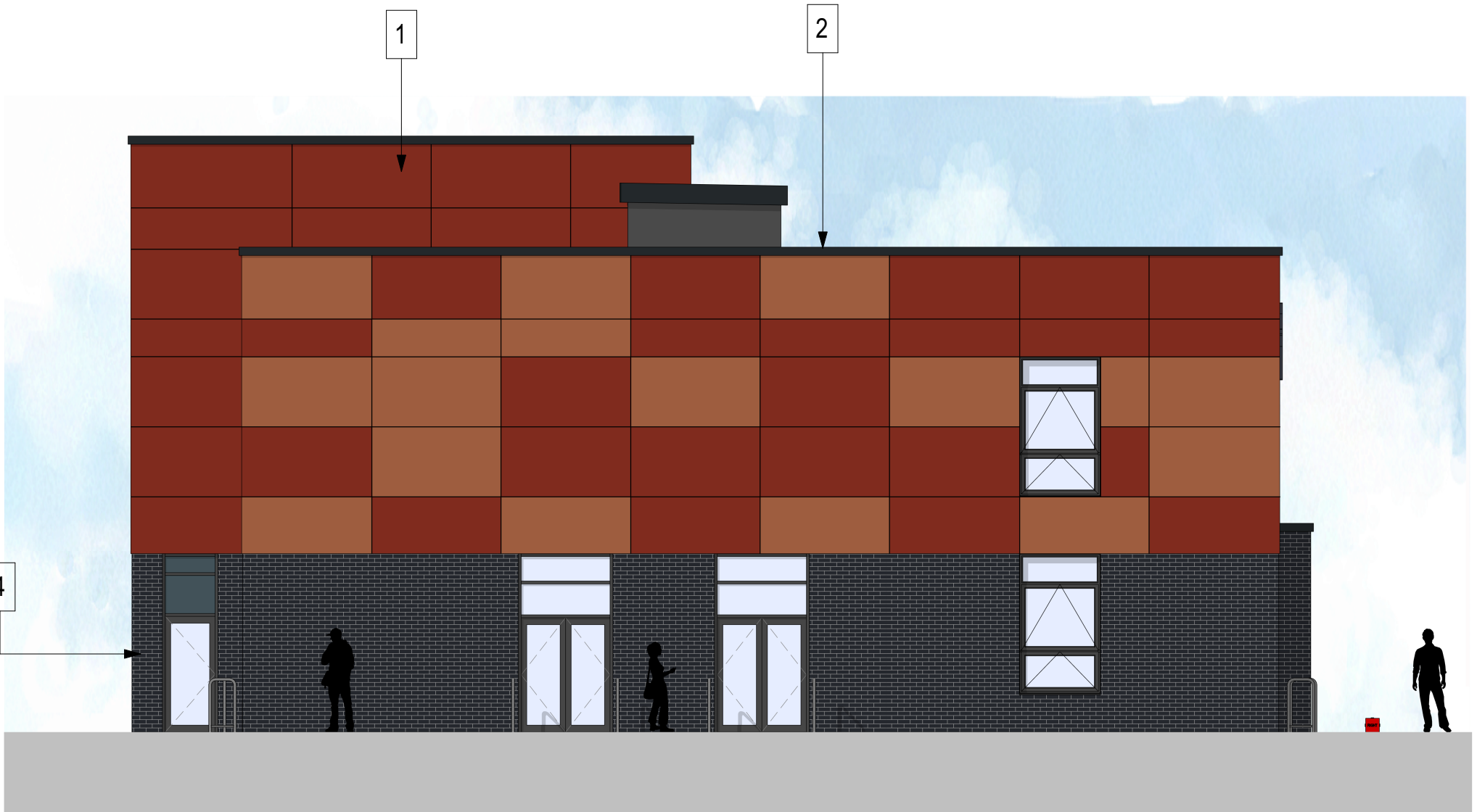
South Elevation (Rear)

Scale - 1 : 100



West Elevation (LHS)

Scale - 1 : 100



East Elevation (RHS)

Scale - 1 : 100