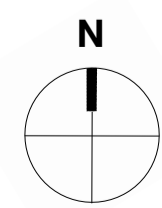


Coquet Partnership

Wider Landscape Plan

Northumberland County Council is proposing to replace James Calvert Spence College (JCSC) school, alongside investment into refurbishing the South Avenue site of JCSC to create new facilities for Amble Primary School and the creation of a new special education need and disabilities (SEND) school in Amble.

Members of the local community, school staff, parents and carers are invited to view the design proposals and provide feedback prior to submission of the planning application. There will also be further opportunity to comment once the planning application has been submitted.



James Calvert Spence College

Context

Several options for the redevelopment of James Calvert Spence were considered. This proposal was deemed to be the best for the following reasons:

- The land to the east of the recreation ground is fallow and forms part of the existing school estate
- The land is within NCC's ownership
- There are no land acquisitions required or encroachment on the greenbelt
- The new building and new all-weather provision can be built without disruption to the operation of the existing school
- There is space for the contractor's site compound and access, whilst the works take place
- The works, other than the final demolition of the existing facilities, will be done in one phase minimising disruption
- The new school building can be two storeys in height as there is sufficient space to do so
- The scale and mass will be sympathetic to the immediate neighbours, adding to the streetscape of Acklington Road
- Community assets are enhanced, creating a new sports and recreation hub for the residents of Amble and beyond
- There is no temporary loss of facilities whilst the development is constructed
- The disruption to residents and local football clubs who currently use the site will be minimised

A number of alternative locations were also considered, including the recreation ground. There were, however, uncertainties attached to this approach, such as ownership and potential restrictive covenants as well as the need to replace the recreation ground and loss of access during the works.

Other locations considered were deemed too far away from the town centre, creating potential transport issues to and from the school, changes of use and agricultural tenancies to consider.



Refurbishment and extension to the existing



New build on existing site



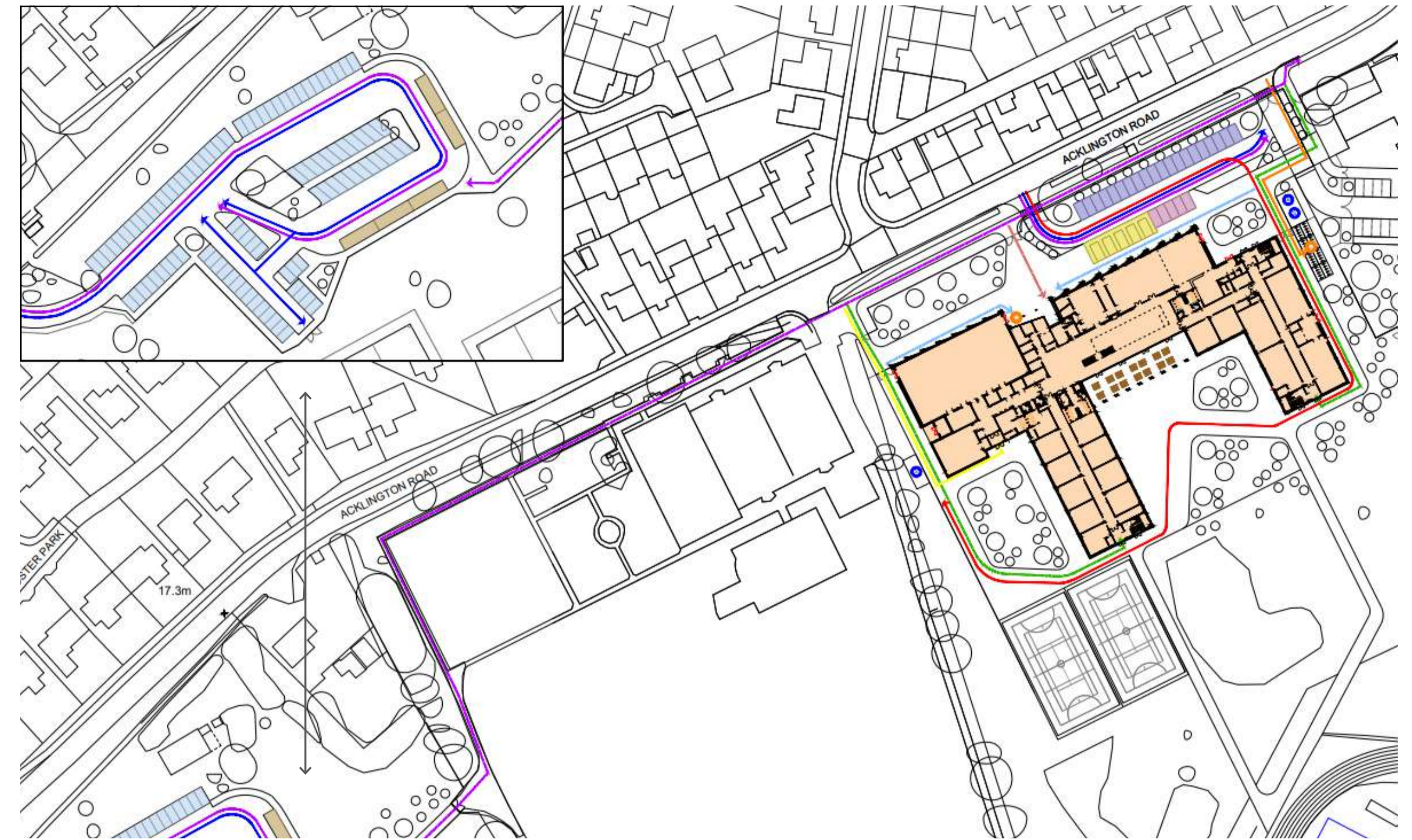
New build on existing car park



New build on 'hockey pitch' site

Transport

Proposed Access and Circulation Strategy



Baseline information will be collated through traffic surveys associated with the existing schools. The proposals will alter the movements on the local road network. The baseline information will be used to assess the impacts associated with the resulting changes. The existing car park above (top left) will be retained and enhanced for secure staff parking and out of hours community parking.

Color	Description
Blue	Car Circulation
Light Blue	Service / Deliveries Circulation
Red	Emergency Access
Orange	Cycle Access
Green	Car Park Access / Public Access along School Frontage
Yellow	Community Access
Light Green	Pupil Access
Dark Green	Teacher Access (and late Pupil Access)
Light Green	Visitor Access
Blue	Cycle Store
Blue	Bin Store
Blue	External M&E Plant
Blue	Staff & 6th Form Parking (50no. Spaces)
Blue	Visitor Parking (20no. Spaces)
Blue	Accessible Parking (5no. Spaces)
Blue	EV Charging Bays (5no. Spaces)
Blue	Bus/Coach Drop-off & Pick-up (5no. Spaces)



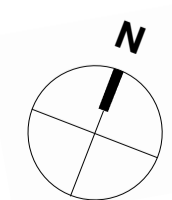
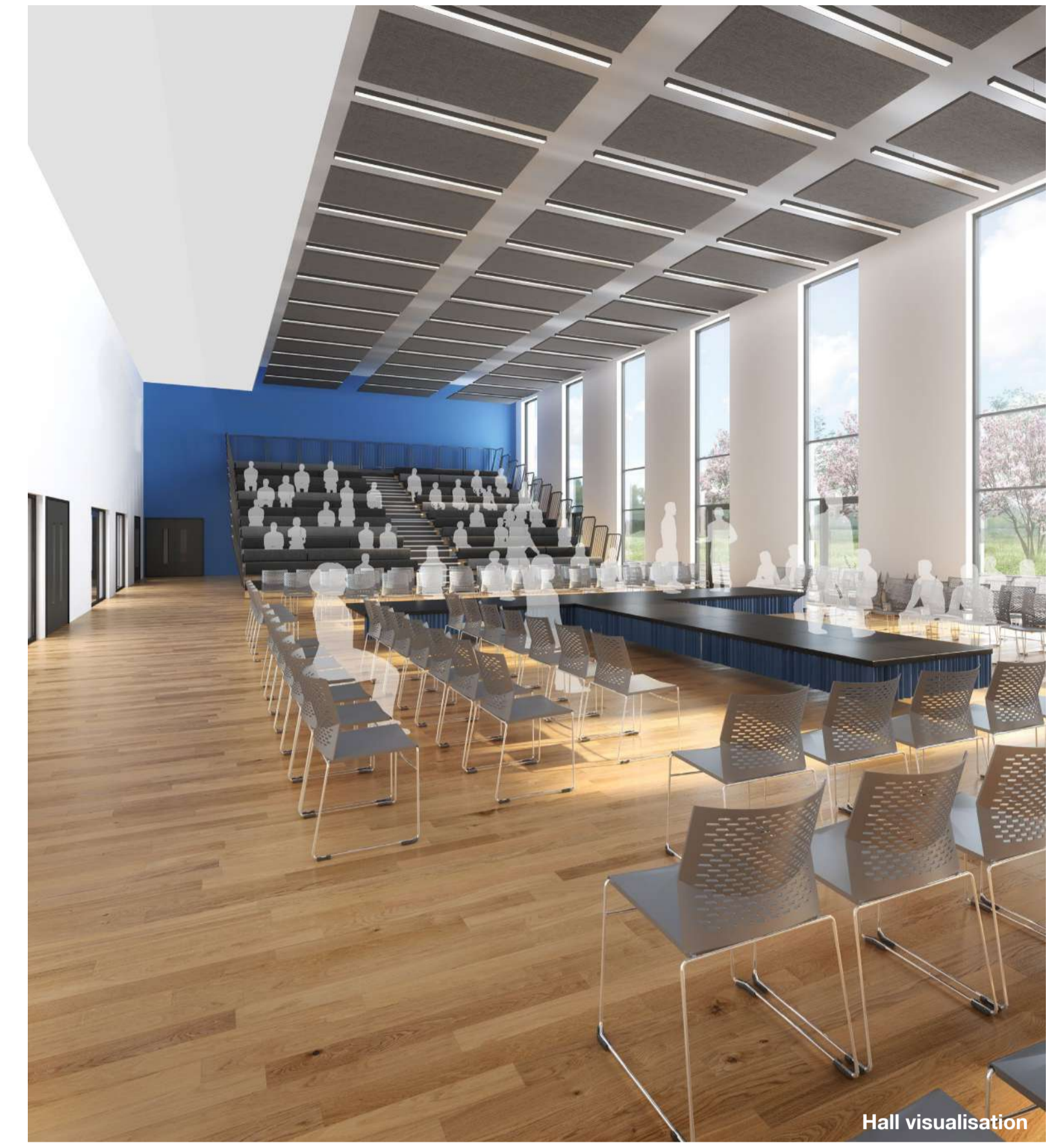
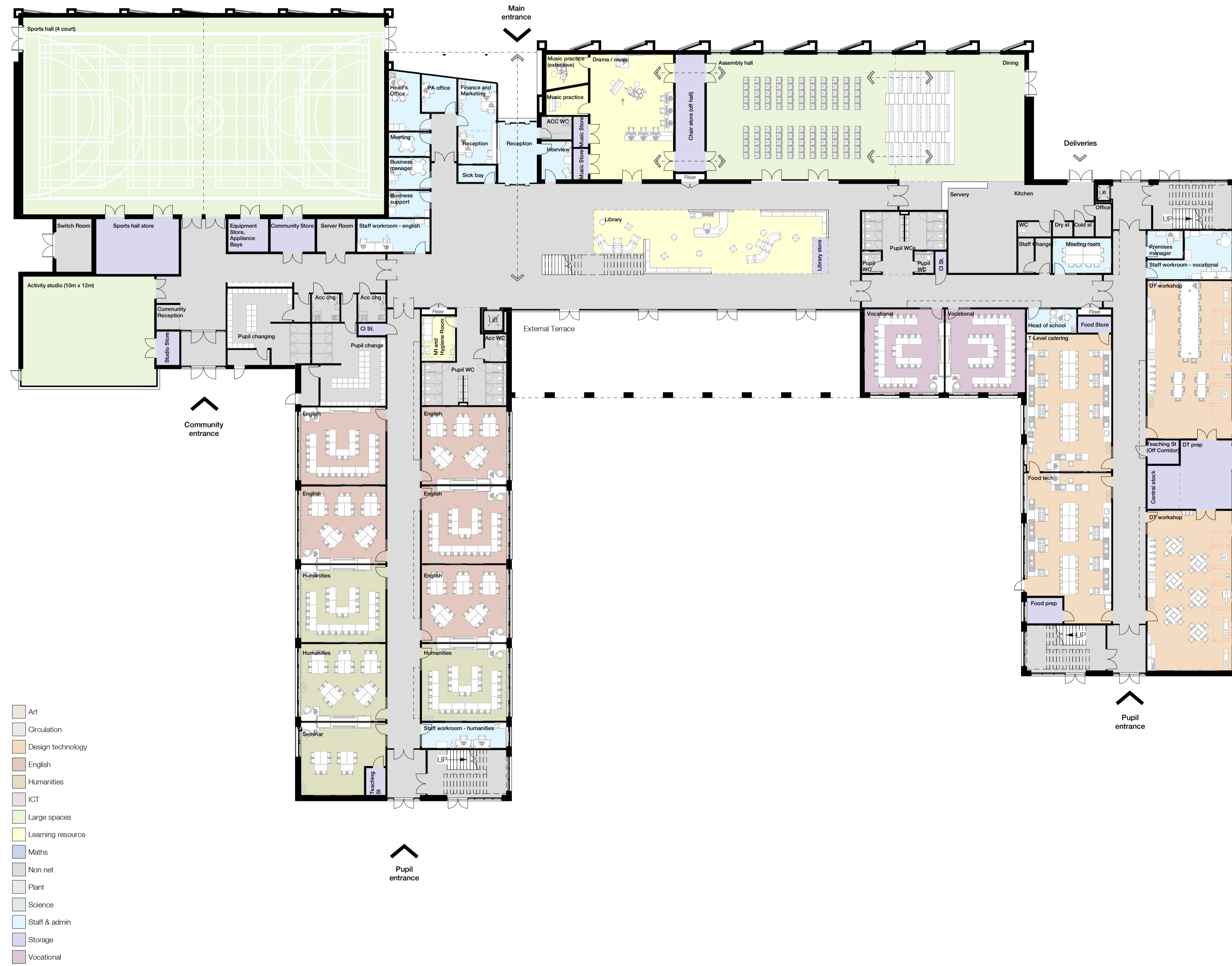
James Calvert Spence College Landscape Plan



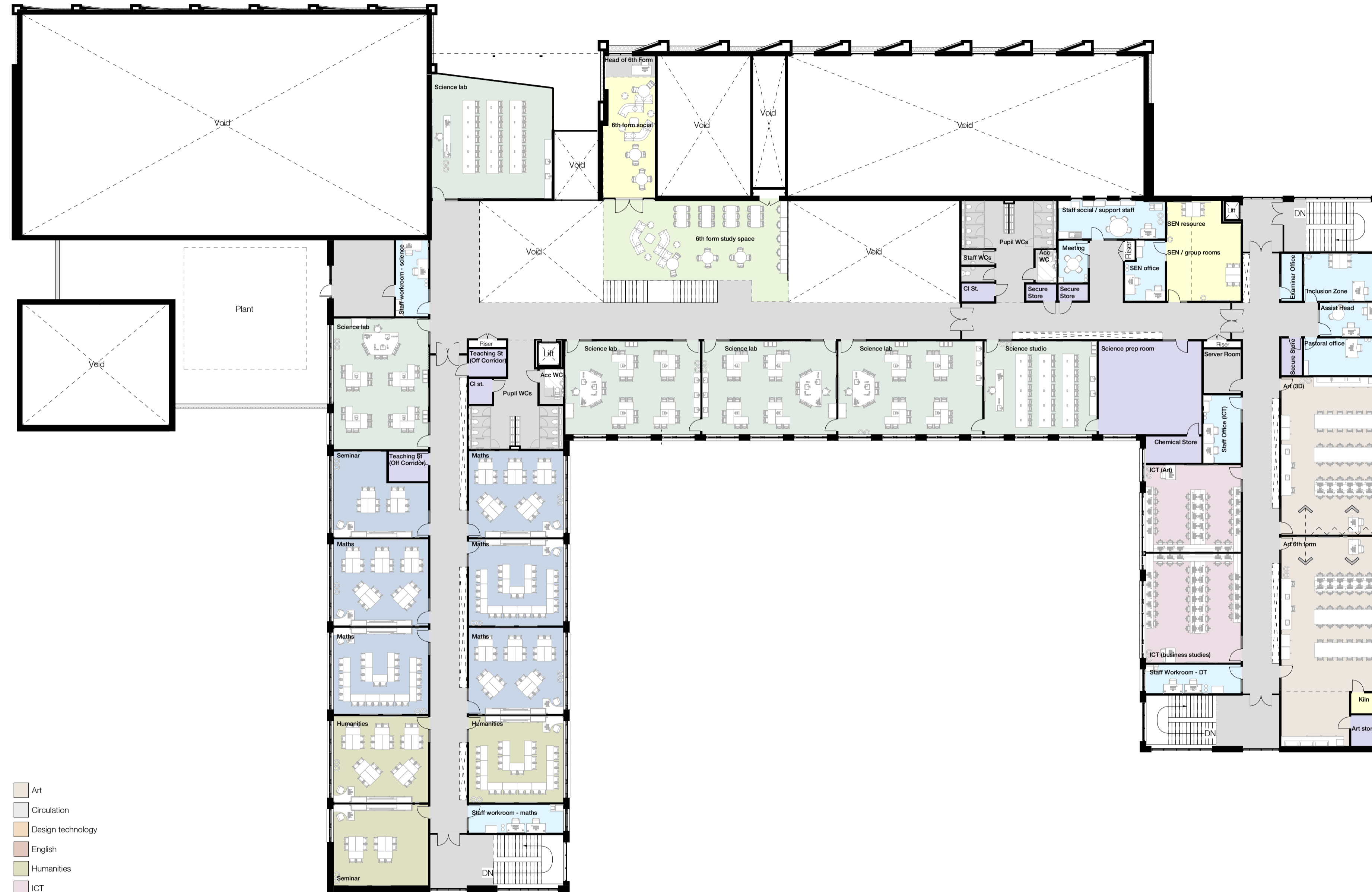
- LEGEND**
- Site Boundary
 - Hard Landscape**
 - Vehicular Surface
 - Pedestrian Surface
 - Porous Macadam Surfacing to Multi-use Games Area
 - Resurfaced Running Track
 - All Weather Sports Pitch
 - Fence Line (Proposed/Existing)
 - Soft Landscape**
 - Amenity Grass (Existing to be retained where possible)
 - Scrub / Wildflower Grassland (Existing to be retained where possible)
 - Existing Tree Retained
 - Areas of New Tree Planting
 - Schools**
 - High School



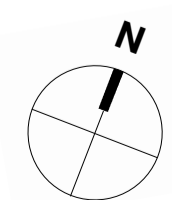
James Calvert Spence College
Proposed Ground Floor Plan



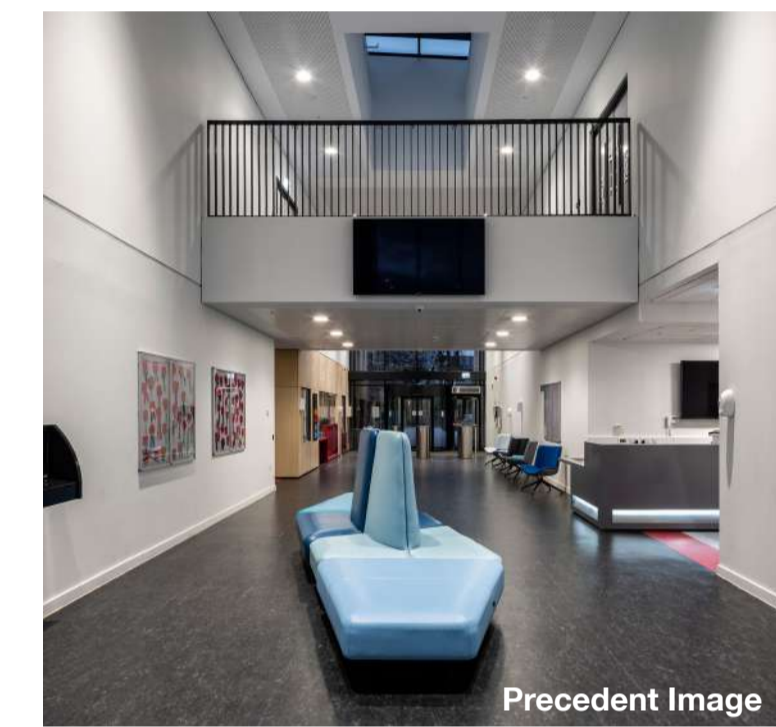
James Calvert Spence College
Proposed First Floor Plan



- Art
- Circulation
- Design technology
- English
- Humanities
- ICT
- Large spaces
- Learning resource
- Maths
- Non net
- Plant
- Science
- Staff & admin
- Storage
- Vocational



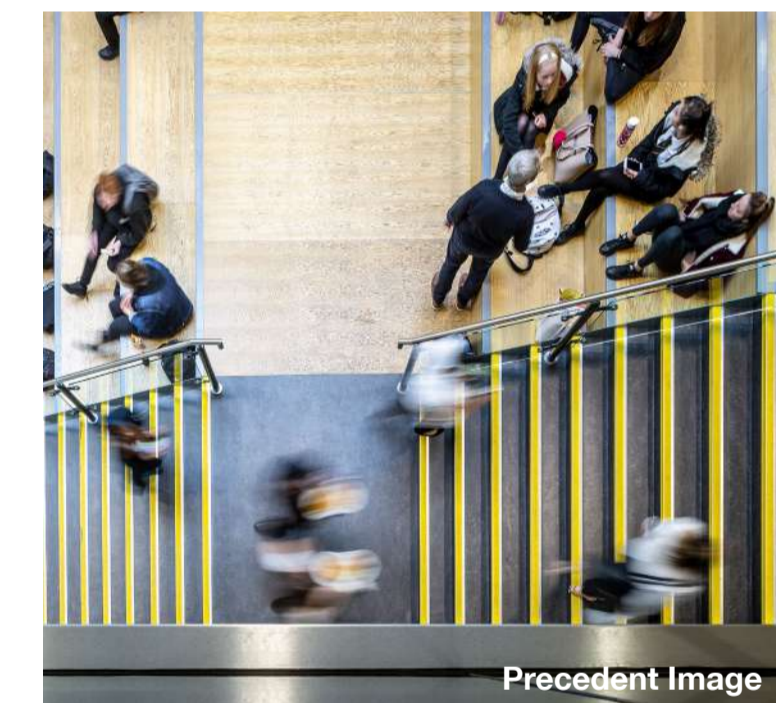
Classroom visualisation



Precedent Image



Precedent Image



Precedent Image

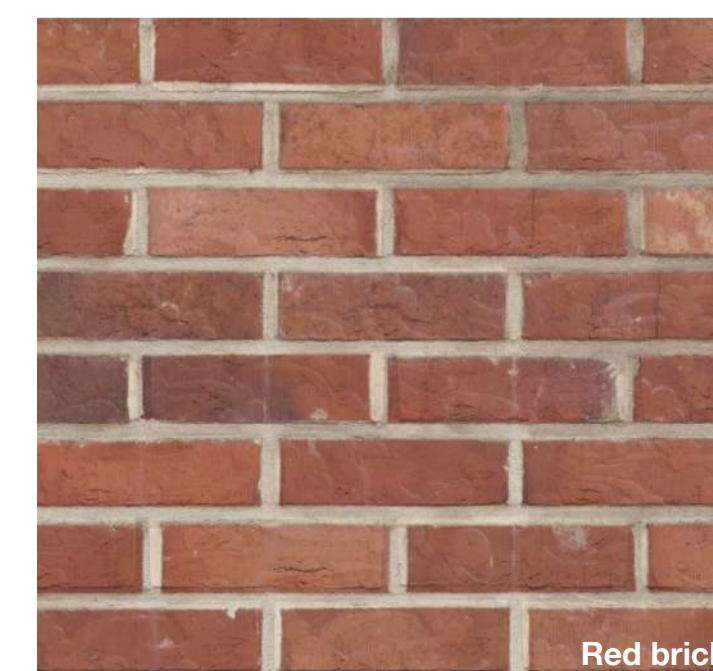
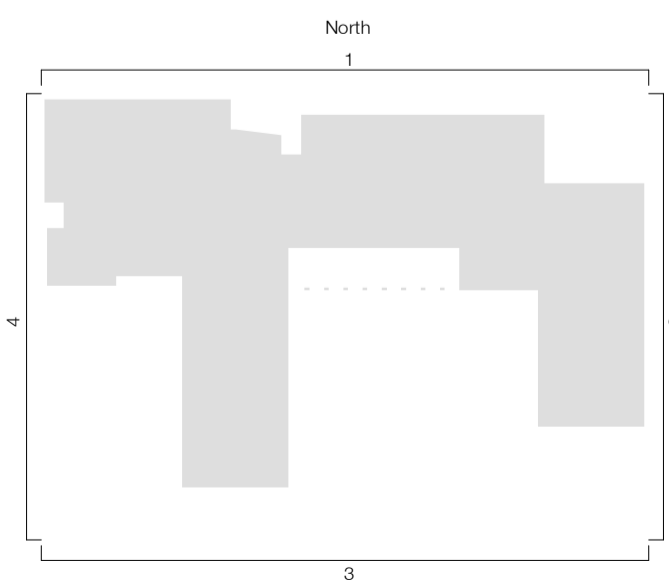


Precedent Image



Social space visualisation

James Calvert Spence College
Proposed Elevations



James Calvert Spence College
Visualisation



Amble Primary and Barndale at Amble Landscape Plan

James Calvert Spence Middle School is being refurbished and extended to accommodate Amble Primary School and Barndale SEN School, as part of the local plans to move to a two tier education system.



Barndale at Amble
Special Educational Needs School



Existing Extension Existing Extension

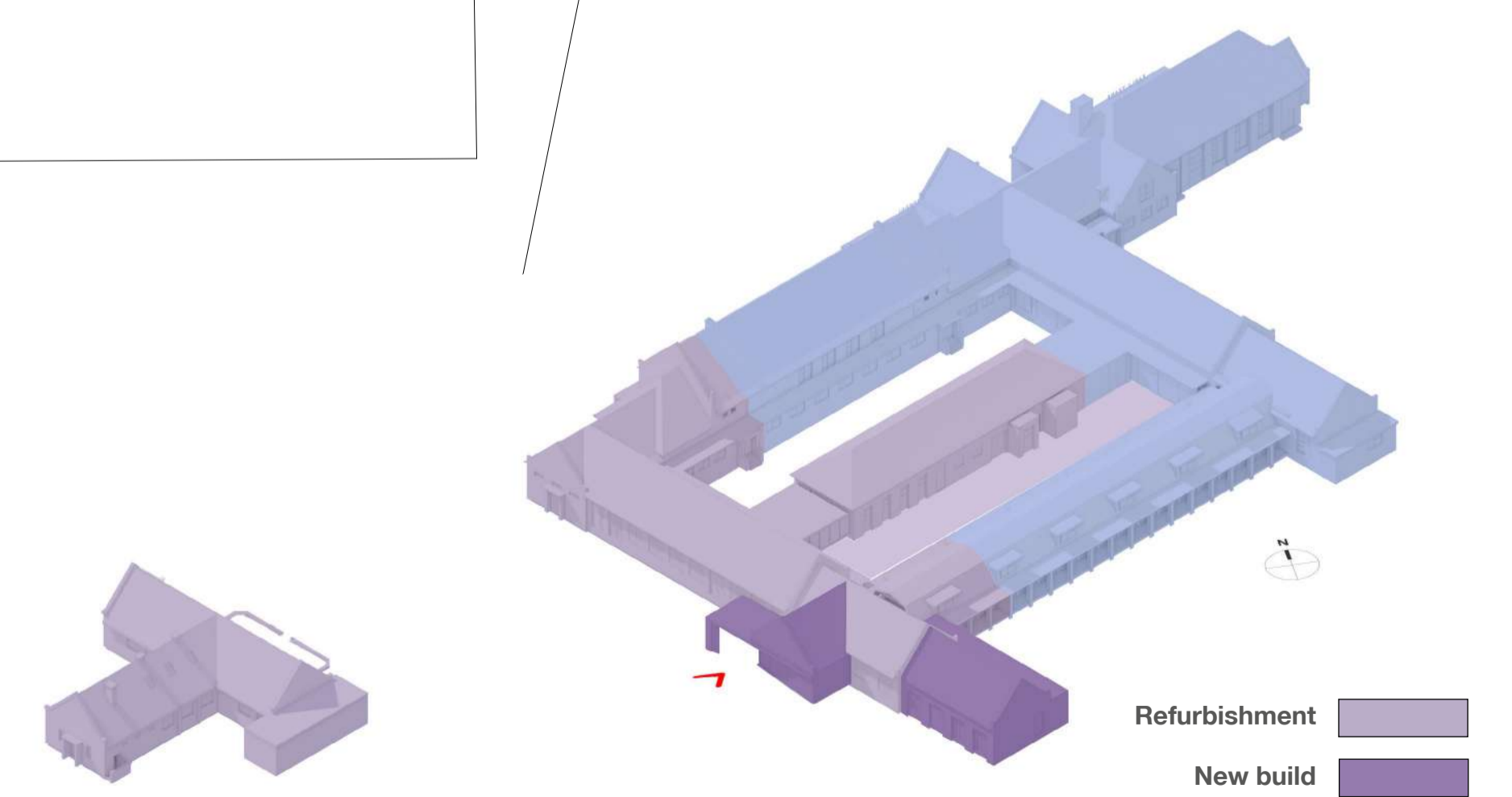
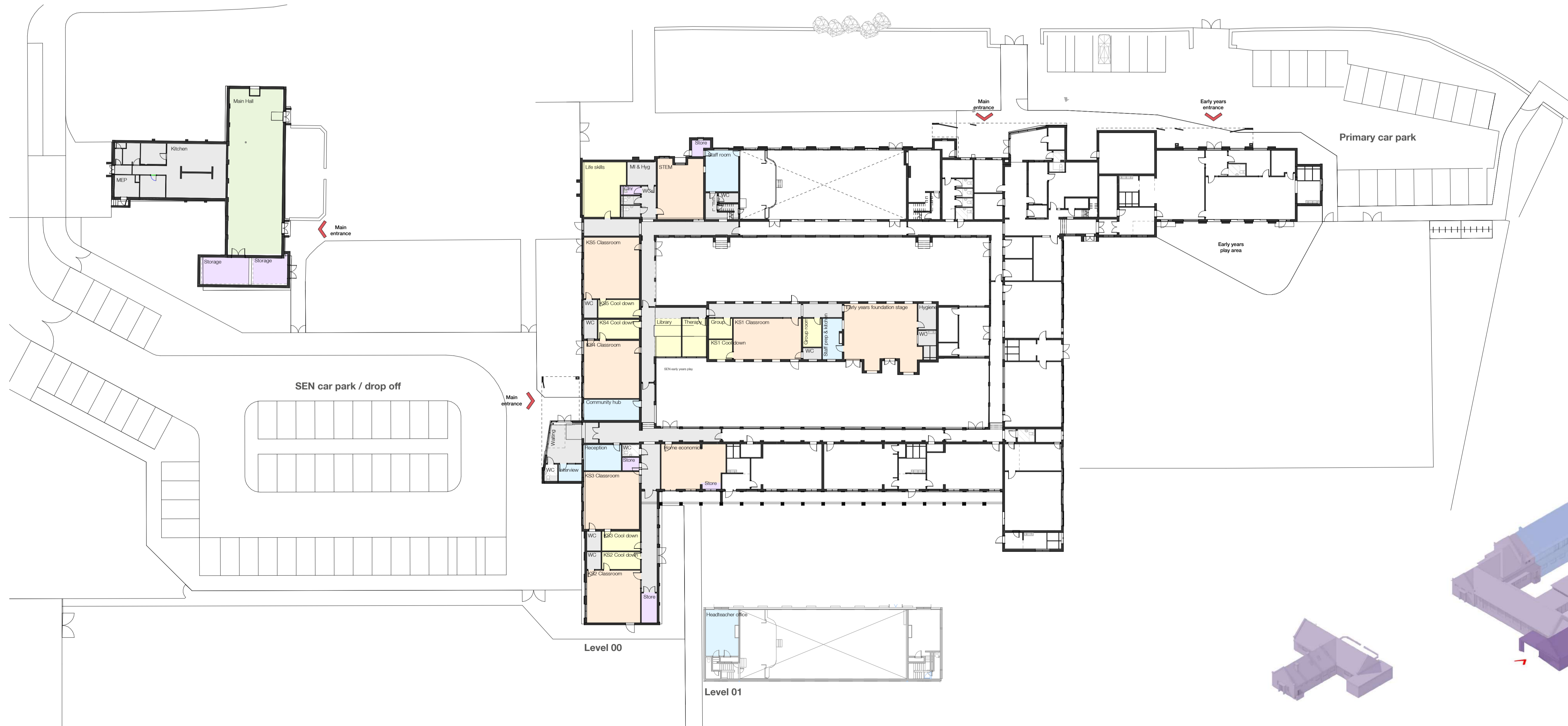


Diagram showing SEN school portion of building

Amble Primary School
Primary School and Nursery

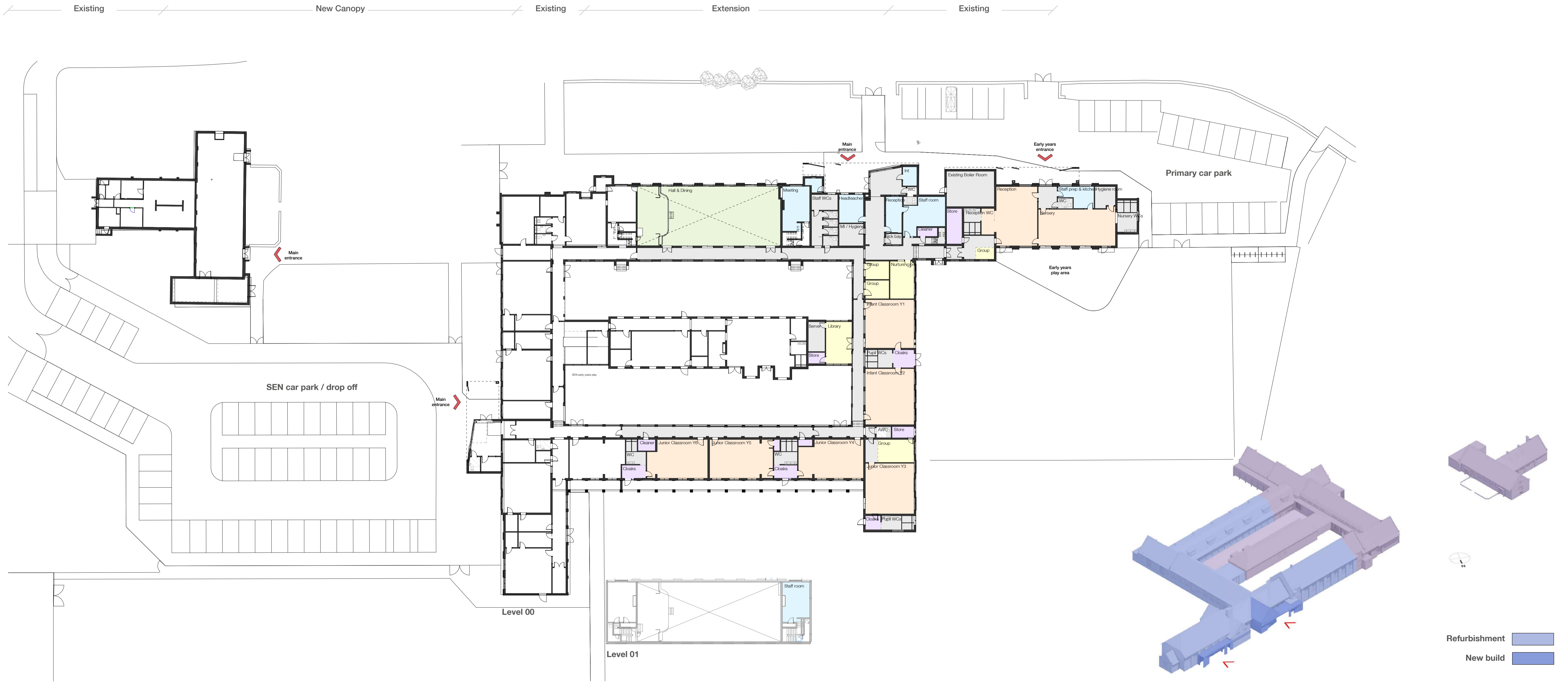


Diagram showing primary school portion of building