

7 Section AA  
1 : 100



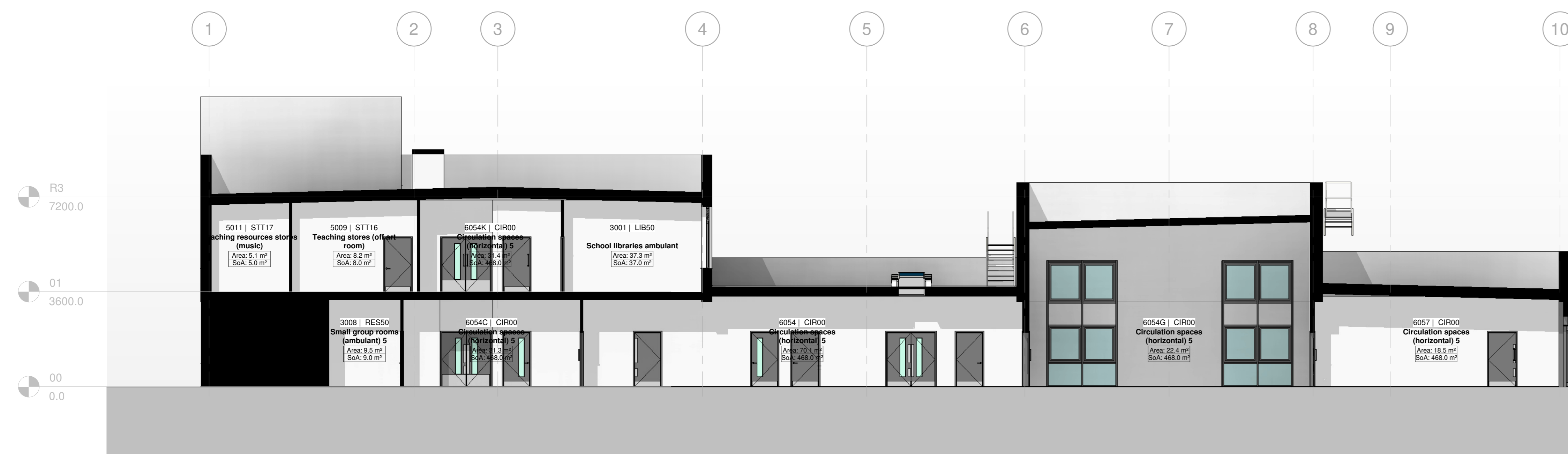
1 Section BB  
1 : 100

### CDM Regulations

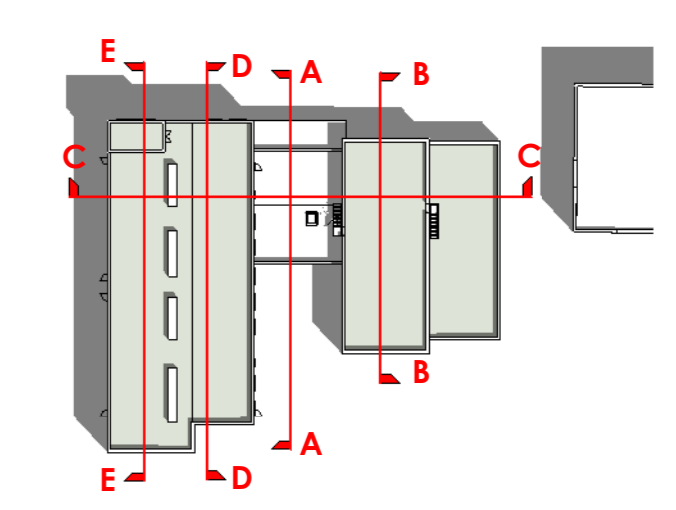
Please note identify those hazards which the designer deems to be significant. Unusual, not likely to be obvious to a competent Contractor and/or officer to manage. If any such hazards are identified and not listed below then they should be brought to the attention of the Architect.

HAZARD	Date Assessed	Date Mitigated
R01 Red list pre-construction information	13/09/2022	-/-/-
R02 Red list specification of fragile materials	13/09/2022	-/-/-
R03 Red list spraying of harmful substances	13/09/2022	-/-/-
R04 Red list electrical equipment	13/09/2022	-/-/-
R05 Amber list large and heavy glass panels	13/09/2022	-/-/-
R06 Amber list certified for installing curtain wall	13/09/2022	-/-/-
A11 Amber list blackwork with >3.5m high	13/09/2022	-/-/-
A12 Amber list the traffic routes	13/09/2022	-/-/-
A13 Amber list heavy construction components	13/09/2022	-/-/-
C01 Green list safe access to materials storage	13/09/2022	-/-/-
C02 Green list safe access to materials storage	13/09/2022	-/-/-
C03 Green list safe access to materials storage	13/09/2022	-/-/-
C04 Green list safe access to materials storage	13/09/2022	-/-/-
C05 Green list safe access to materials storage	13/09/2022	-/-/-
C06 Green list safe access to materials storage	13/09/2022	-/-/-
C07 Green list safe access to materials storage	13/09/2022	-/-/-
C08 Green list safe access to materials storage	13/09/2022	-/-/-
C09 Green list safe access to materials storage	13/09/2022	-/-/-
C10 Green list safe access to materials storage	13/09/2022	-/-/-
C11 Green list safe access to materials storage	13/09/2022	-/-/-
C12 Green list safe access to materials storage	13/09/2022	-/-/-
C13 Green list safe access to materials storage	13/09/2022	-/-/-
C14 Green list safe access to materials storage	13/09/2022	-/-/-
C15 Green list safe access to materials storage	13/09/2022	-/-/-

The risks highlighted below should be read in conjunction with the CDM Hazard Identification Checklist, preliminary Assessment and the Method Risk Document.



6 Section CC  
1 : 100



3 Section DD  
1 : 100



4 Section EE  
1 : 100

PO1	2022-11-04	First Issue	TRT
REV	DATE	DESCRIPTION	BY
CLIENT			
CONTRACTOR			

ORIGINATOR: **cpmg** | REF: **CPMG Architects Ltd**  
 Birmingham | 13 St. Peter's Lane, Nottingham, NG1 5JF | 0115 959 9599  
 London | 31-35 Abchurch Lane, London, EC4N 3BE | 0207 482 1805  
 Birmingham | The Lakes Building, Bull Street, Birmingham, B4 6ED | 0121 481 2992  
 enquiries@cpmg-architects.com | www.cpmg-architects.com

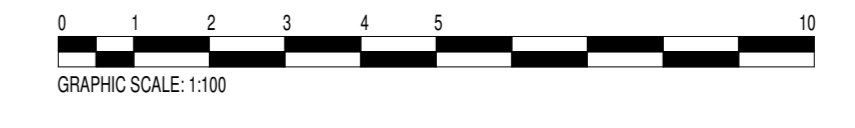
PROJECT: **Prory School Building Building Model**

DRAWING TITLE: **PM\_40\_40\_34:General arrangement drawings GENERAL ARRANGEMENT: SECTIONS**

GA Section AA, BB, CC, DD & EE

DRAWING STATUS: **PRELIMINARY**

DRAWN BY	DATE	CHKD BY	SCALE	MEDIA
DB	2022-10-03	TRT	As indicated	A0
PROJECT - ORIGINATOR - ZONE - LEVEL - TYPE - ROLE - NUMBER	REVISION			
SRP1094-CPM-01-ZZ-DR-A-2001	P01			



Copyright © CPMG Architects Limited 2022. All rights reserved. No part of this publication may be reproduced, stored in a retrieval system or transmitted in any form or by any means without prior permission of CPMG Architects Limited. Do not scale from drawing. Use figured dimensions only. All dimensions to be checked on site.  
 ISO 9001:2015 Quality Management | ISO 14001:2015 Environmental Management  
 BS EN ISO 19650 Building Information Modelling