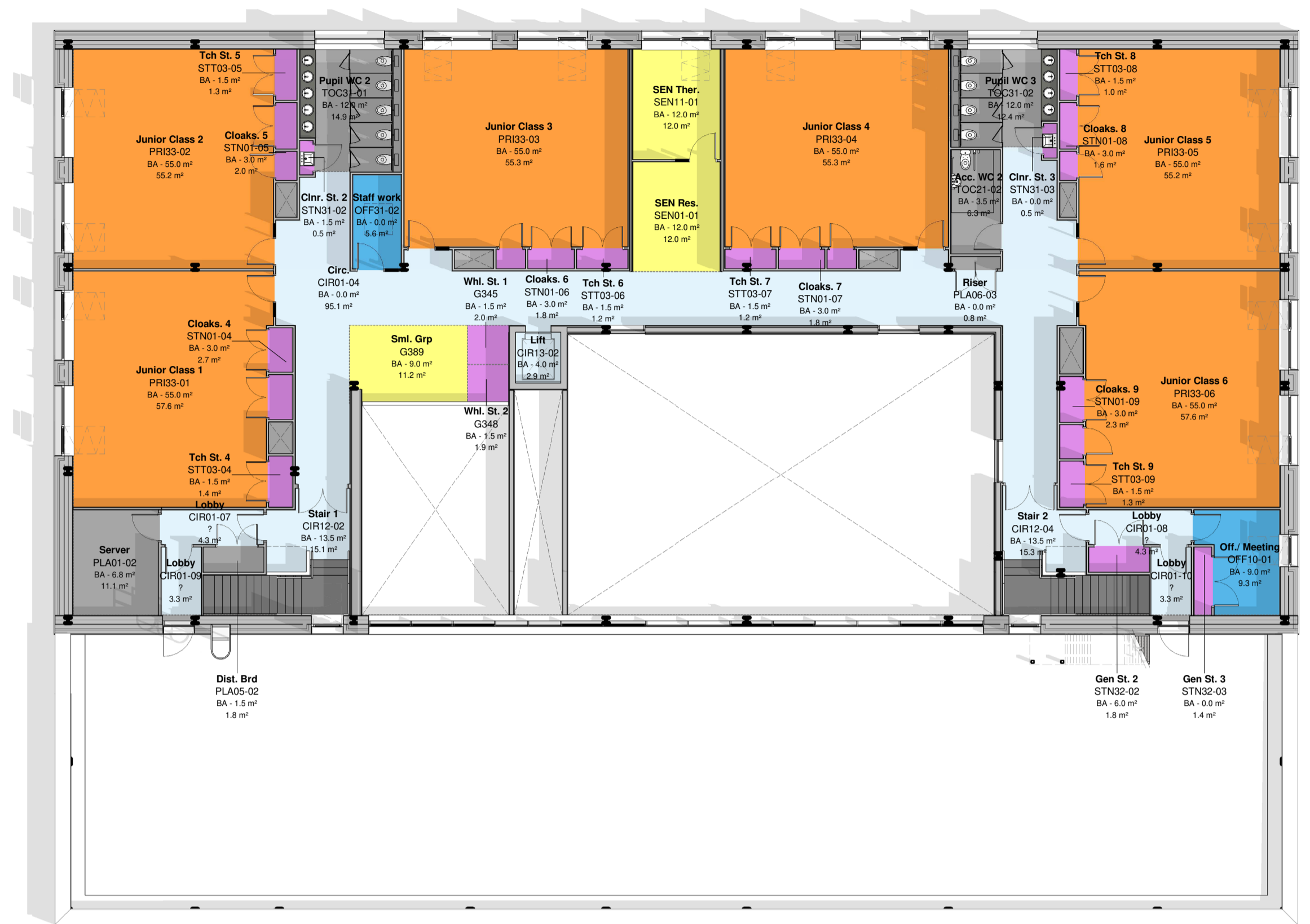


Belmont C of E Primary School

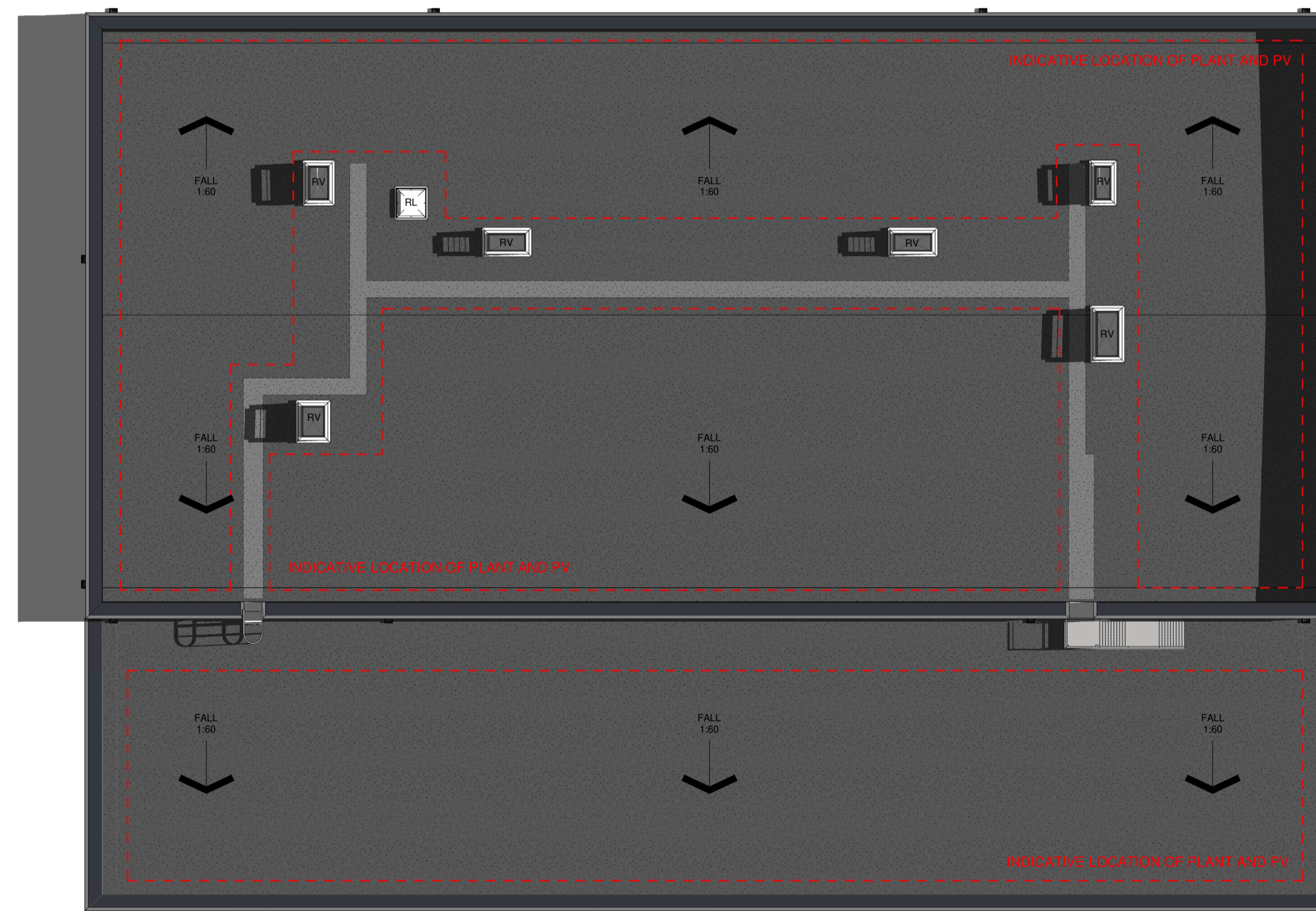
All information shown is work in progress and subject to future design development



Ground Floor Plan



First Floor Plan



Roof Plan

Belmont C of E Primary School

All information shown is work in progress and subject to future design development



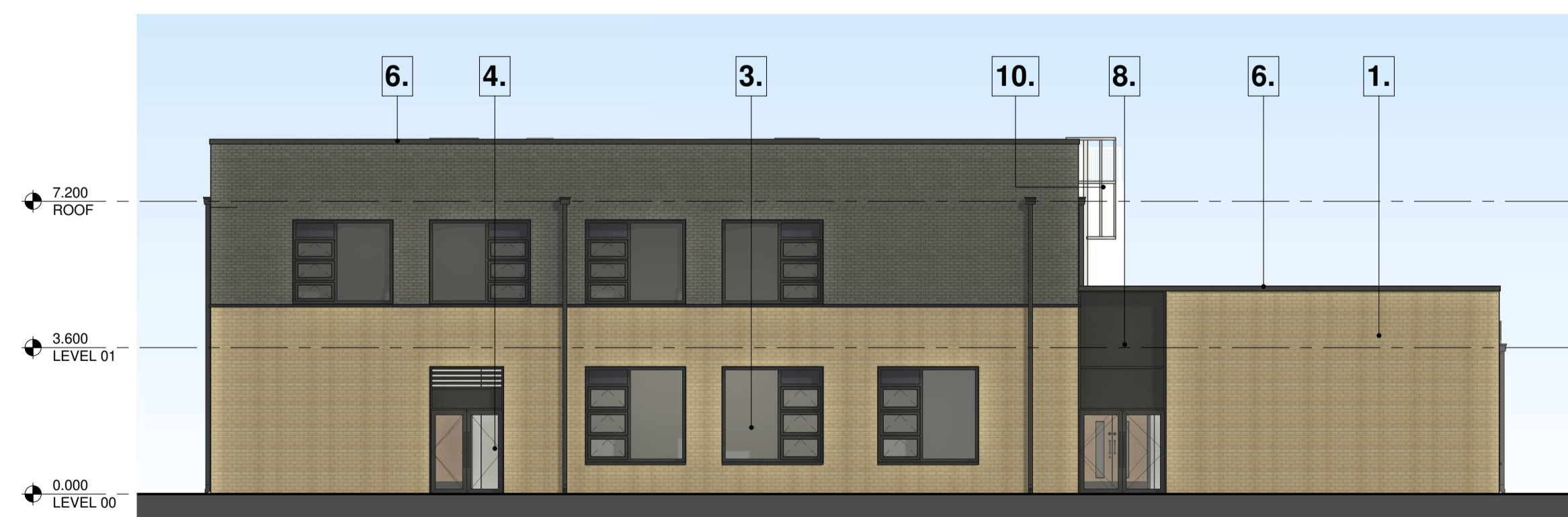
GA ELEVATION - NORTH



GA ELEVATION - SOUTH

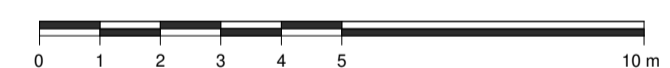


GA ELEVATION - EAST



GA ELEVATION - WEST

Building Elevations



MATERIALS KEY

1. CLAY FACING BRICK
COLOUR - BUFF/GREY
2. PPC ALUMINIUM CURTAIN WALL
COLOUR - ANTHRACITE GREY (RAL 7016)
3. PPC ALUMINIUM WINDOW
COLOUR - ANTHRACITE GREY (RAL 7016)
4. PPC ALUMINIUM DOOR (GLAZED, SOLID, LOUVRE)
COLOUR - ANTHRACITE GREY (RAL 7016)
5. PPC ALUMINIUM LOUVRE
COLOUR - ANTHRACITE GREY (RAL 7016)
6. PPC ALUMINIUM PARAPET CAPPING
COLOUR - ANTHRACITE GREY (RAL 7016)
7. RAINWATER GOODS
COLOUR - ANTHRACITE GREY (RAL 7016)
8. INSULATED GLAZED SPANDREL PANEL
COLOUR - ANTHRACITE GREY (RAL 7016)
9. FEATURE SIGNAGE (INDICATIVE - TBC)
COLOUR - STAINLESS STEEL
10. GALVANISED STEEL ESCAPE STAIR / LADDER
COLOUR - STEEL LOCKED GATE TO PREVENT ACCESS



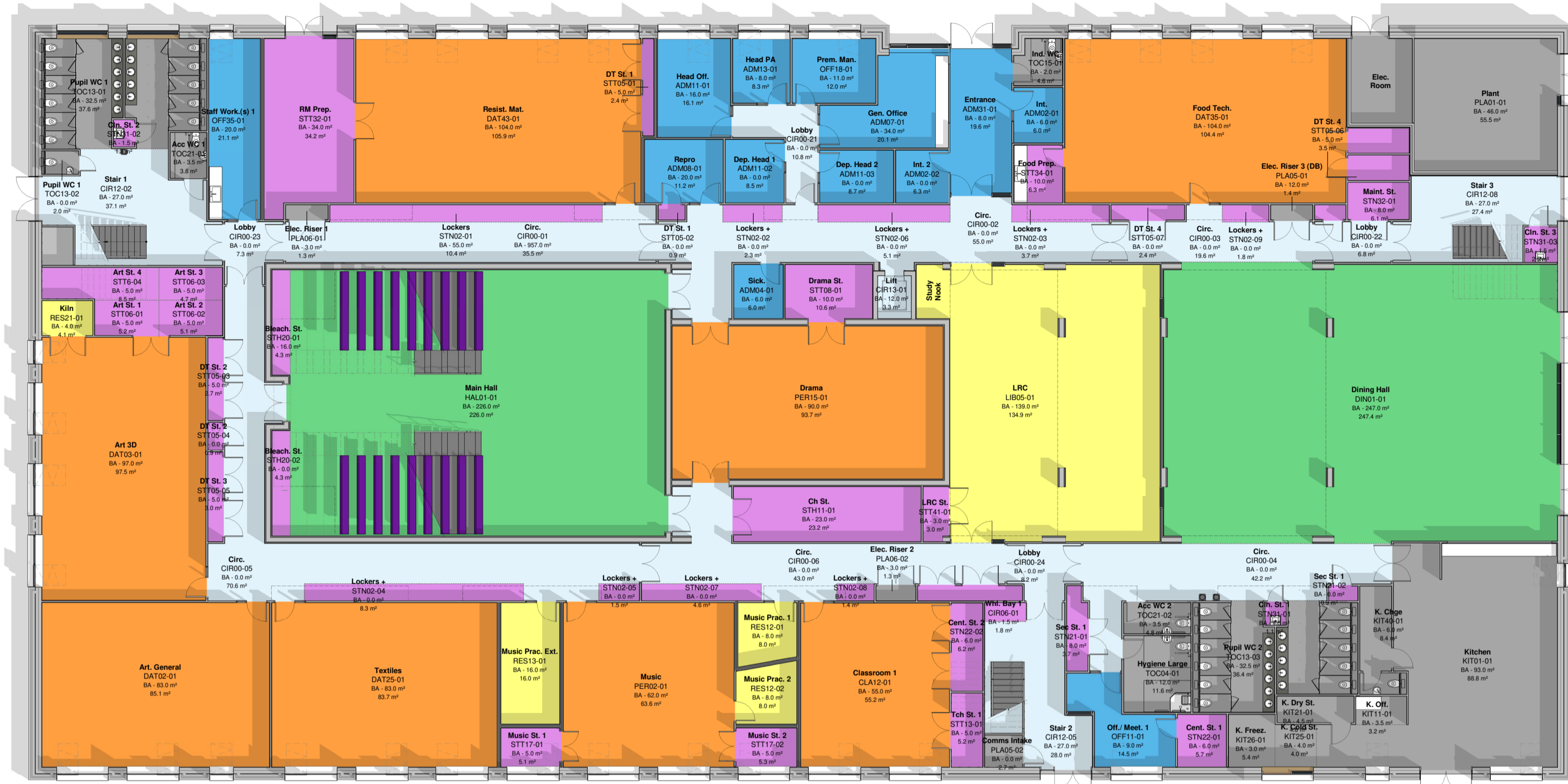
Main dining area



Main library area

Belmont Community School

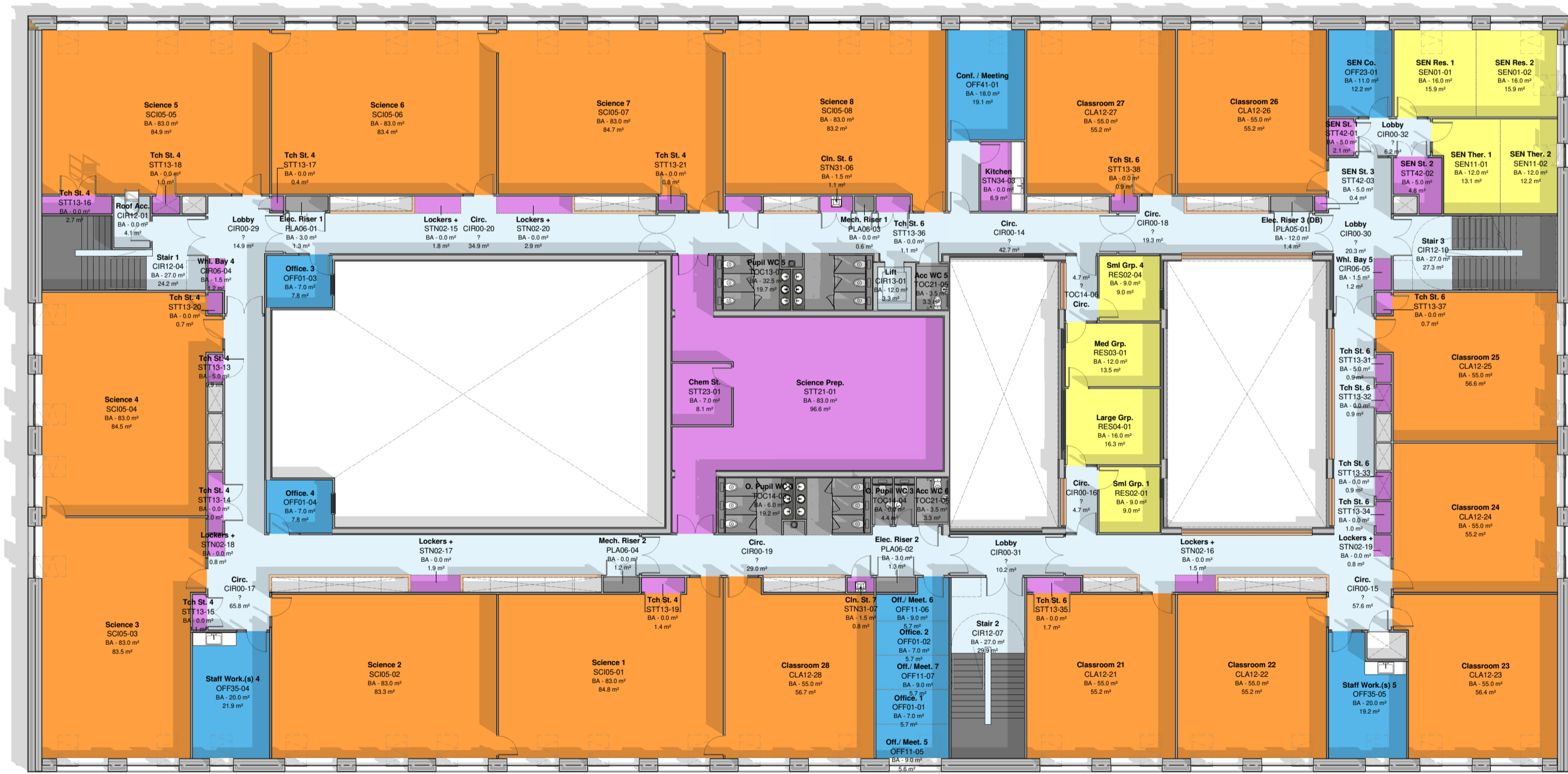
All information shown is work in progress and subject to future design development



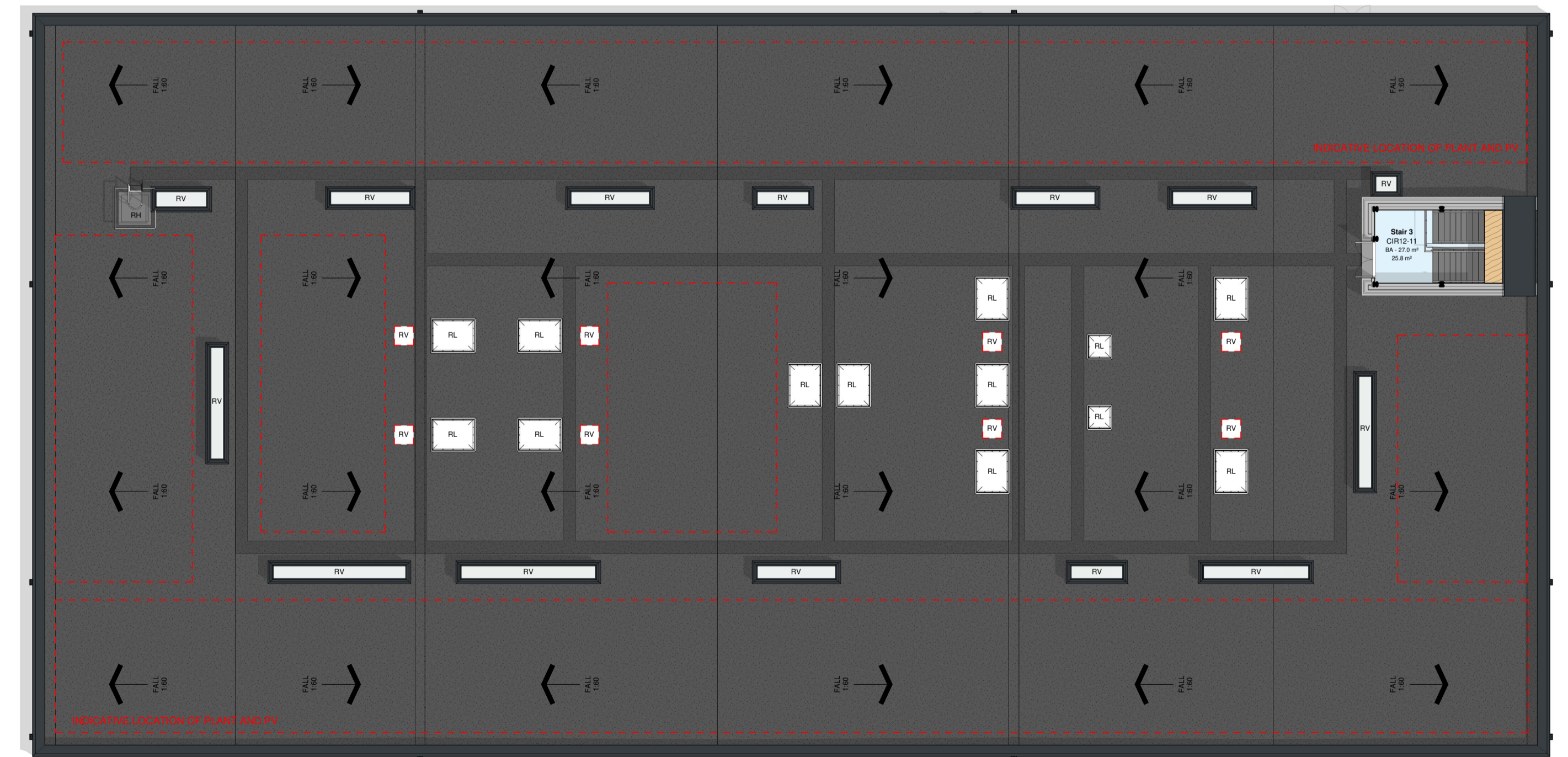
Ground Floor Plan



First Floor Plan



Second Floor Plan



Roof Plan